

How do I use the HTML editor?

Site: [HSU Moodle](#)
Course: The HSU Faculty Guide to Moodle-Spring 2006
Book: How do I use the HTML editor?
Printed by: Guest User
Date: Monday, May 29 2006, 12:37 PM

Table of Contents

[What is the HTML editor?](#)

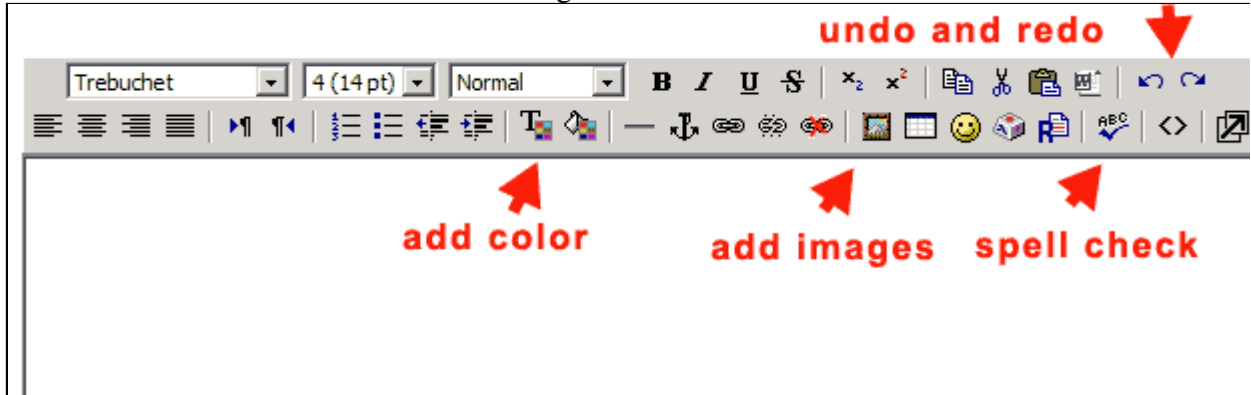
[How do I add an image with the editor?](#)

[What if I don't see the editor?](#)

What is the HTML editor?

The HTML editor allows you to write HTML online in your Moodle course using standard word processor tools. The editor enables you to do things like add pictures, link files, add color and formatting to your messages, spell check your messages, undo and redo, change your fonts, etc.

Below is a screen shot of the editor showing some of the common commands.

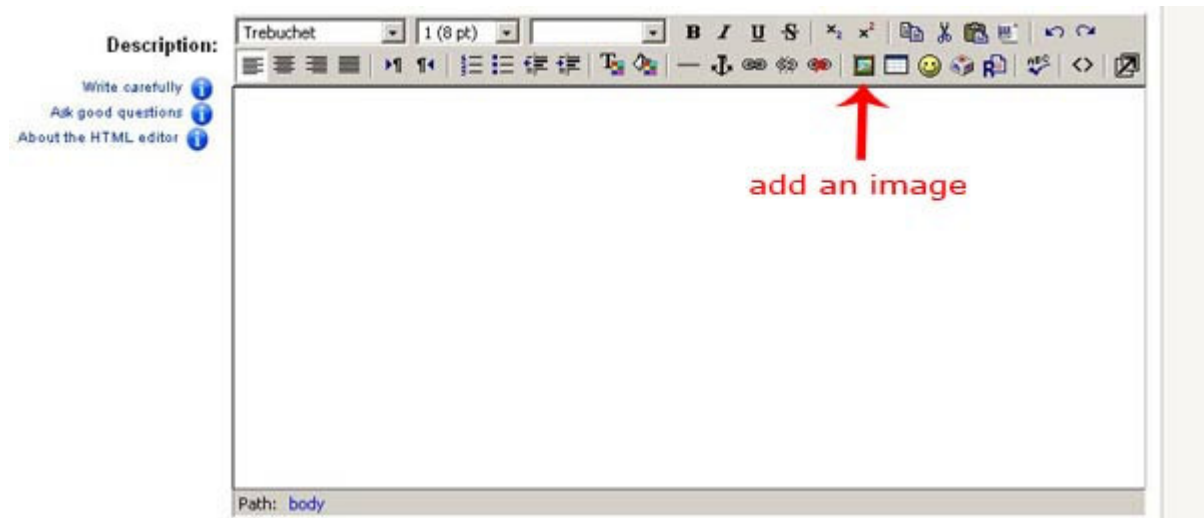


The HTML editor is available in most places where you add text in Moodle, for instance if you choose 'Compose a web page' from the "Add files.." drop down, when you make a forum post, when you create a Book or a Lesson.

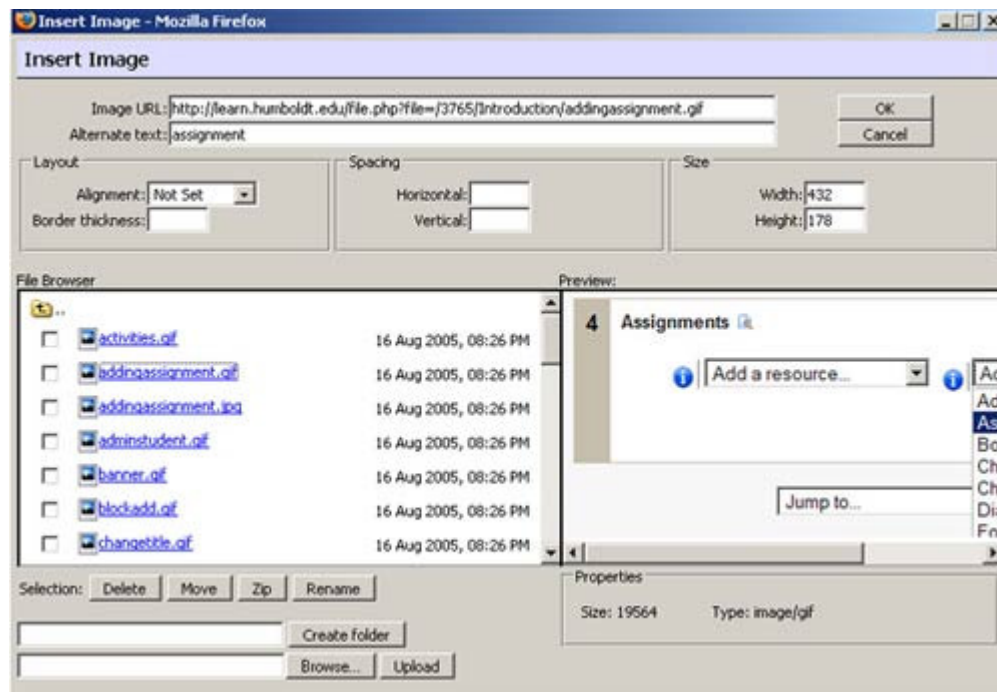
If you do not see the editor, it may be that your browser does not support it. See the "What if I don't see the HTML editor" link below for solutions.

How do I add an image with the editor?

To add an image to an HTML page using the editor first click the 'add an image' icon.



This will open up a window with access to your Moodle files. Upload an image or browse to an image already in the files. Click on the link to the image you want and it will open in the "image url" textbox on the top. Make sure you type in an alternate text and click 'Okay.'



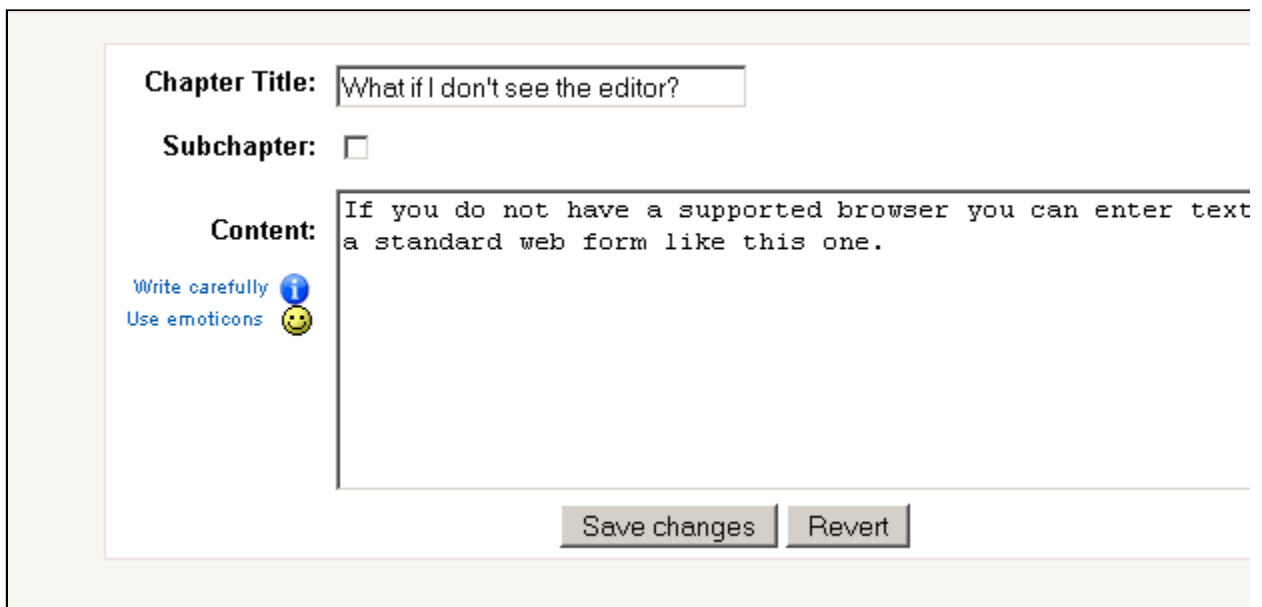
What if I don't see the editor?

The editor does not work in all browsers. On the Macintosh, you will need to use Firefox or Netscape 7 to use the editor. We recommend Firefox: <http://www.getfirefox.com>.

Online HTML editors do not work with the Macintosh Safari browser, Apple is working to resolve the issue, and Microsoft stopped supporting Internet Explorer for the Macintosh in the beginning of 2005.

On Windows, Internet Explorer 5.5+, Firefox and Netscape 7 all work with the HTML editor.

If you do not have a supported browser and you cannot upgrade to a supported browser, you will still be able to enter text and raw HTML into Moodle using standard text entry forms.



The screenshot shows a Moodle HTML editor form. It has a text input field for "Chapter Title" containing "What if I don't see the editor?". Below it is a "Subchapter" checkbox which is unchecked. The "Content" area is a large text area containing the text "If you do not have a supported browser you can enter text a standard web form like this one." To the left of the content area are two links: "Write carefully" with an information icon and "Use emoticons" with a smiley face icon. At the bottom right of the form are two buttons: "Save changes" and "Revert".

I'm using Windows Internet Explorer and I only see the top row of icons for the editor: some versions of IE will occasionally fail to display the entire editor. Refreshing the page will fix the problem (use Control-F5 or click the "Refresh" button in IE's control bar).

